

THIS DRAWING IS UNPUBLISHED.

RELEASED FOR PUBLICATION

ALL RIGHTS RESERVED.

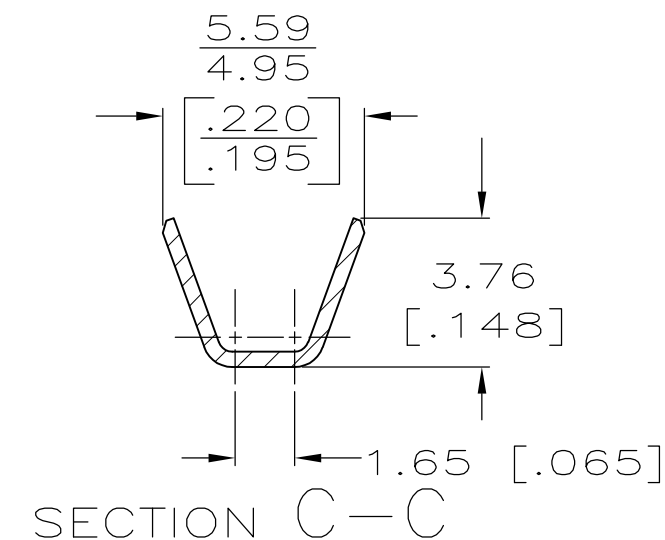
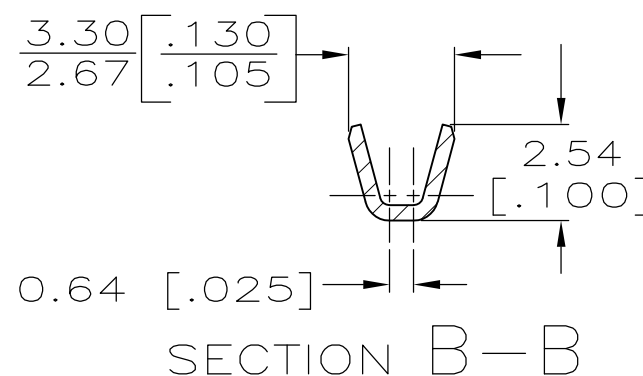
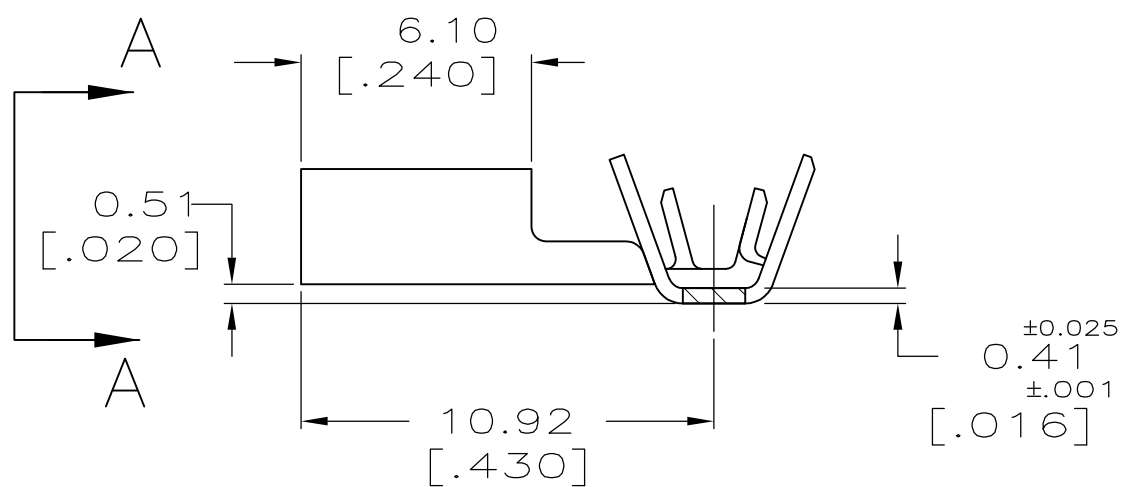
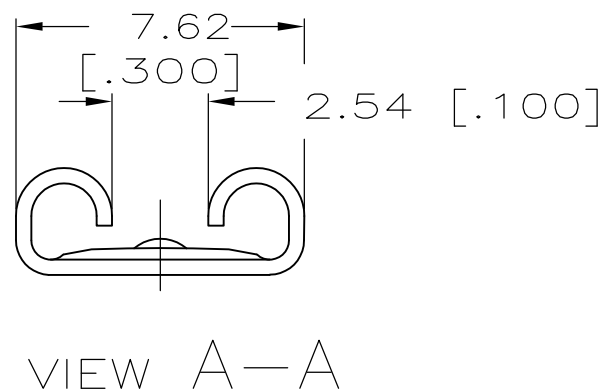
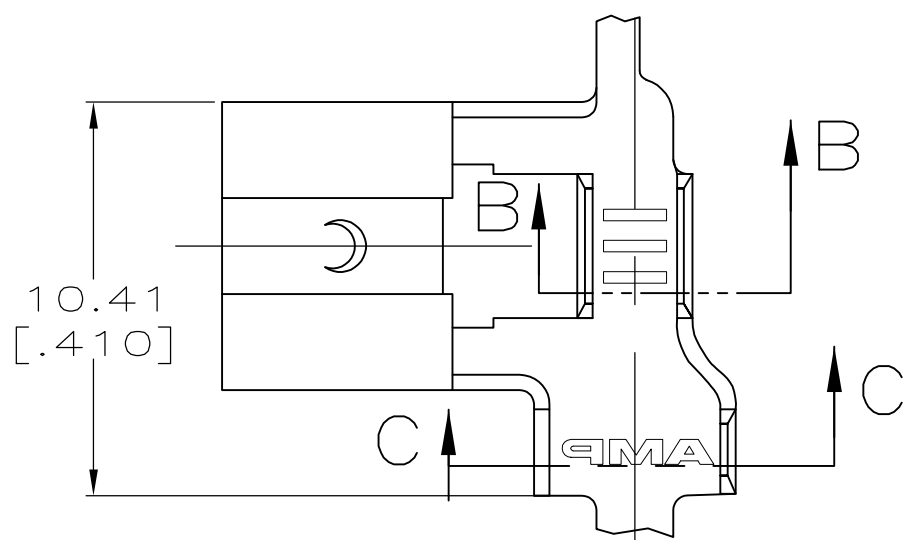
© COPYRIGHT - By -

LOC AF DIST 50

REVISIONS

P	LTR	DESCRIPTION	DATE	DWN	APVD
D1		REVISED PER ECO 13-003180	23FEB13	JR	PD

- 1 CONTINUOUS STRIP ON REELS.
- 2 WIRE SIZE 0.3-0.9mm2 [22-18] AWG
- 3 INSULATION RANGE IS 1.52-2.54 [.060-.100] DIA.
- 4 MATING TAB THK IS 0.81±0.025 [.032±.001]



NICKEL	CR STEEL	62813-3
TIN	BRASS	62813-2
-	BRASS	62813-1
FINISH	FINISH	PART NO.

THIS DRAWING IS A CONTROLLED DOCUMENT.		DWN JR RUTH 4/8/91	TE Connectivity RECEPTACLE, FASTON, FLAG, 6.35 [.250] SERIES					
DIMENSIONS: mm [INCHES]		CHK MS FEHER 4/8/91				NAME		
TOLERANCES UNLESS OTHERWISE SPECIFIED:		APVD R KUZO 4/8/91				SIZE CAGE CODE DRAWING NO RESTRICTED TO		
0 PLC ± - 1 PLC ± - 2 PLC ± - 3 PLC ± 0.38 [.015] 4 PLC ± - ANGLES ± -		PRODUCT SPEC -				A300779 C-62813		
MATERIAL SEE TABLE		FINISH SEE TABLE	APPLICATION SPEC -	SCALE 5:1 SHEET 1 OF 1 REV D1				
CUSTOMER DRAWING								