

## Test Procedure for the NCP58302DSADGEVB Evaluation Board

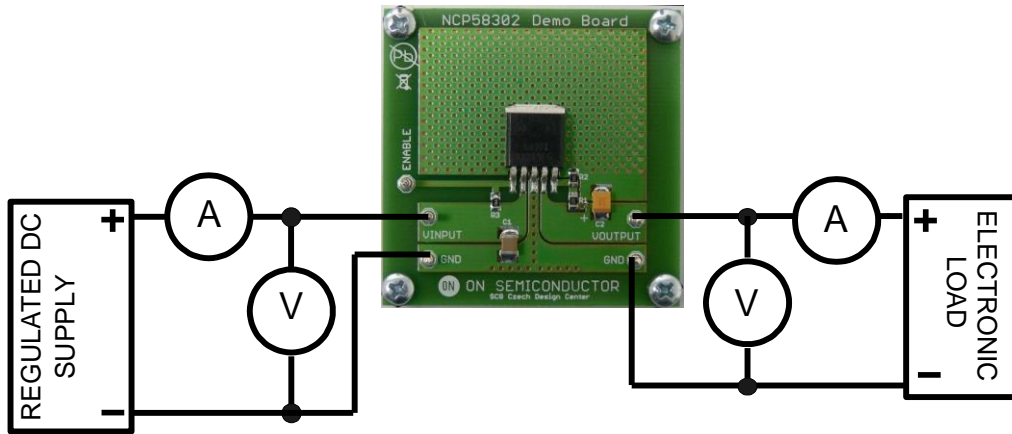


Figure 1: Test Setup

### Test Procedure:

1. Connect the test setup as shown in Figure 1.
2. Apply an input voltage,  $V_{in} = 3.5 \text{ V dc}$
3. Apply  $I_{out} = 10 \text{ mA}$  load.
4. Check that  $V_{out}$  is  $2.5 \text{ V}$
5. Increase  $I_{out}$  load to  $3.0 \text{ A}$
6. Check that  $V_{out}$  is  $2.5 \text{ V}$
7. Power down the load
8. Power down  $V_{in}$
9. End of test